

ESCALA - H=1:2000 (A3)
V=1:200

NOTAS:

LEGENDA:

- PERFIL DO TERRENO NATURAL
- PERFIL DA ROCHA (INFERIDO)
- GREIDE DO PAVIMENTO ACABADO

DEPARTAMENTO NACIONAL DE INFRAESTRUTURA DE TRANSPORTES

REG Nº
LOC

MT

RODOVIA
BR-367/MG

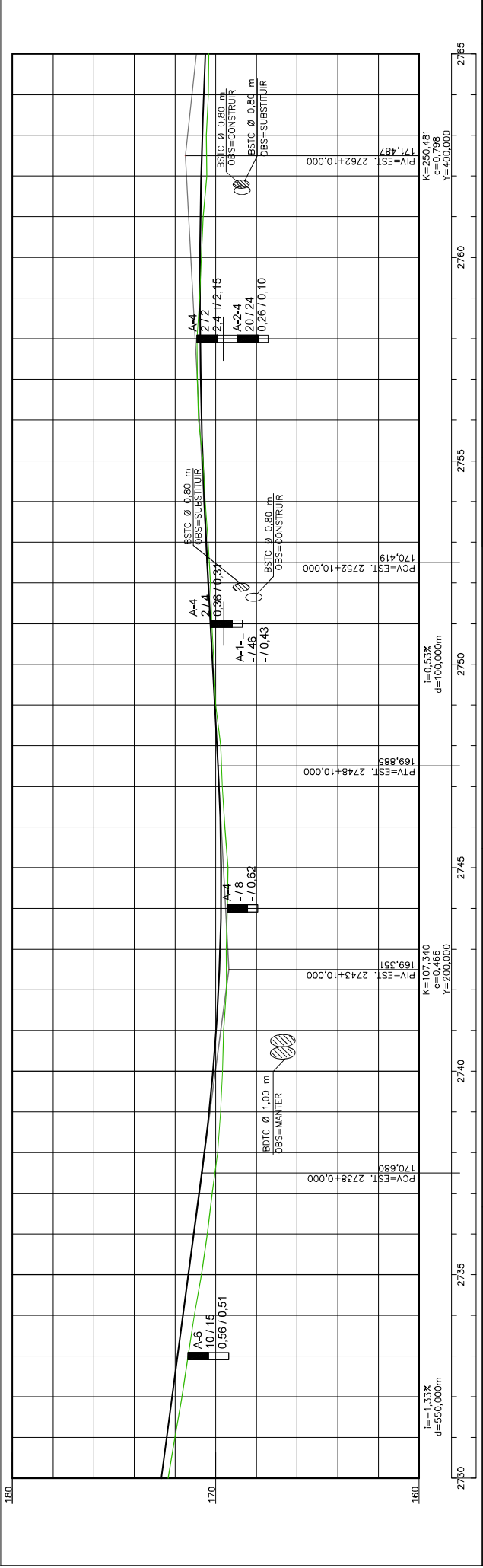
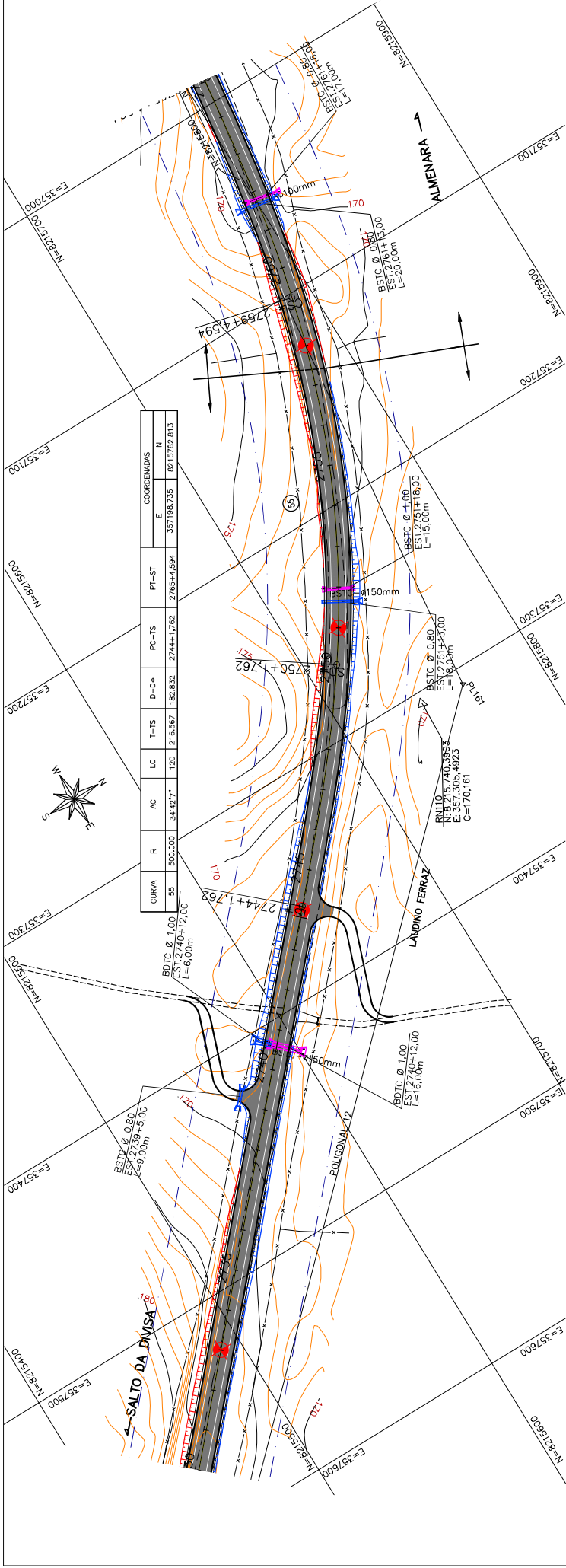
LOTE
01

DATA

VISTO

GEOMETRIA

PLANETA - PERFIL - EST. 2590 A EST. 2625



ESCALA - H=1:2000 (A3)
 V=1:200

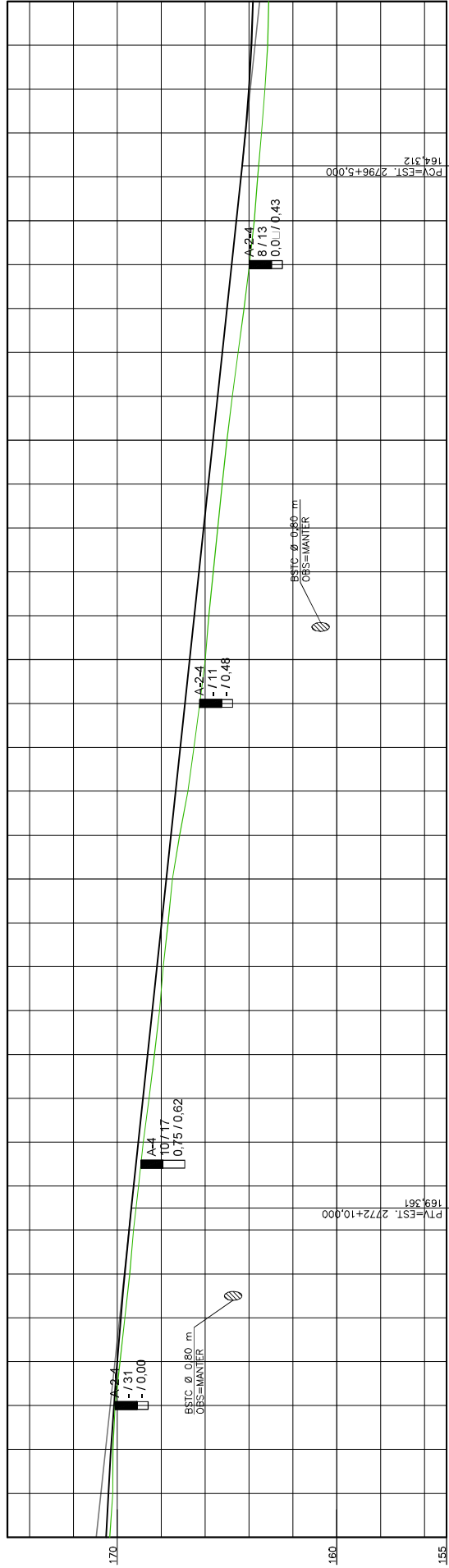
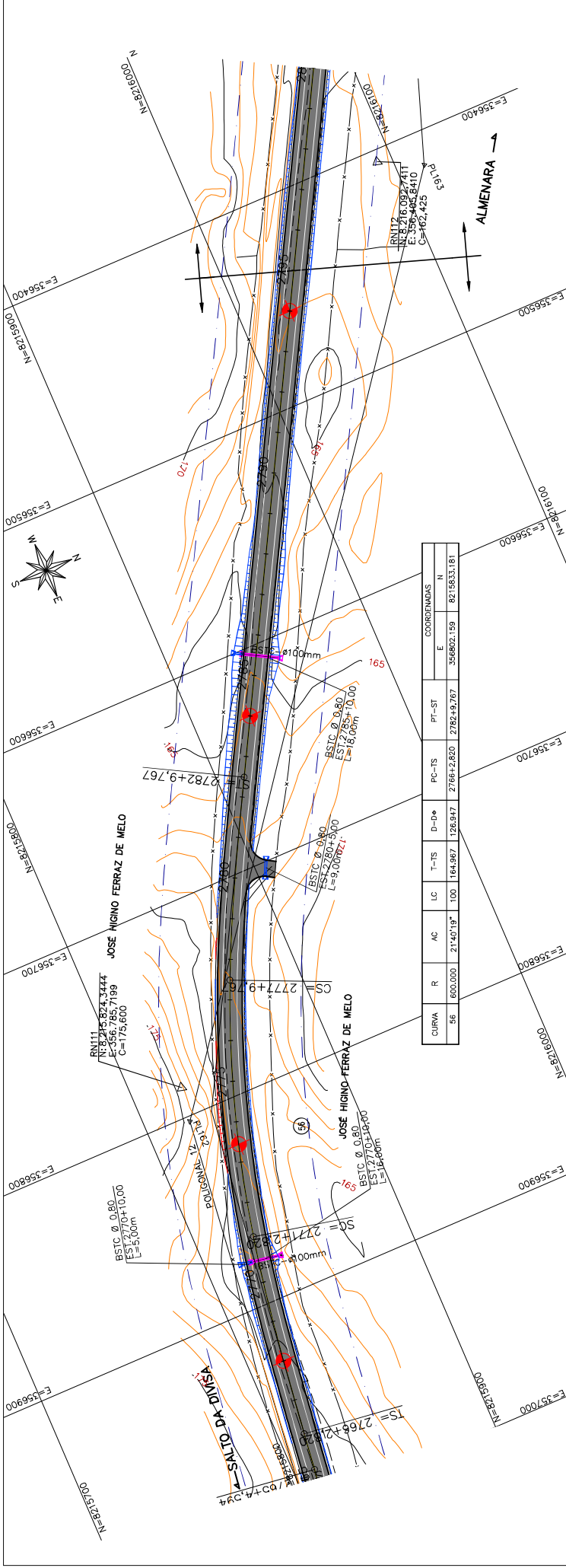
NOTAS:
 LEGENDA:
 PERFIL DO TERRENO NATURAL
 PERFIL DA ROCHA (INFERIDO)
 CREDE DO PAVIMENTO ACABADO

VISTO DATA LOTE 01

DEPARTAMENTO NACIONAL DE INFRAESTRUTURA DE TRANSPORTES
 RODovia BR-367/MG
 LOTE 01

GEOMETRIA
 PLANTA - PERFIL - EST. 2730 A EST. 2785

REG N°
 LOC
 FOLHA LM-7



i = -1,06%
d = 475,000m

ESCALA - H=1:2000 (A3)
V=1:200

NOTAS:

LEGENDA:

- PERFIL DO TERRENO NATURAL
- PERFIL DA ROCHA (INFERIDO)
- CREIDE DO PAVIMENTO ACABADO

DEPARTAMENTO NACIONAL DE INFRAESTRUTURA DE TRANSPORTES

MT

RODOVIA
BR-367/MG

LOTE
01

DATA

VISTO

GEOMETRIA

PLANTA - PERFIL - EST. 2765 A EST. 2800

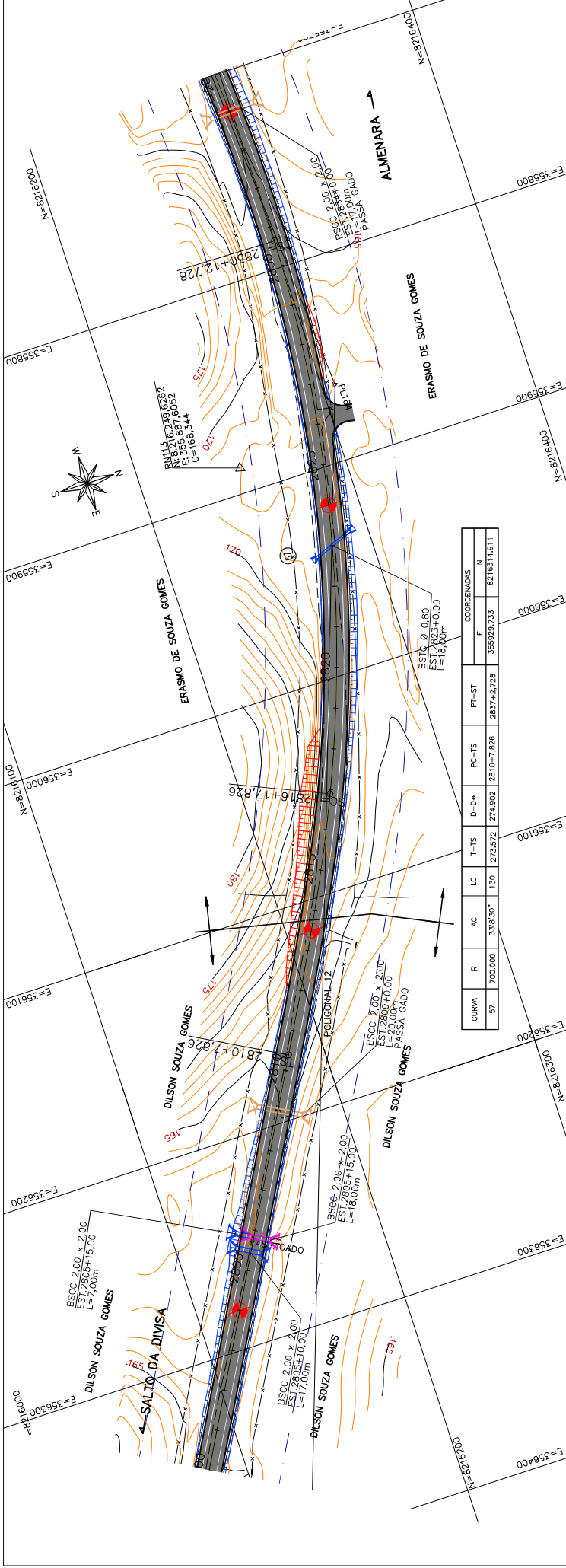
FOHA
L3480

DPP-GP

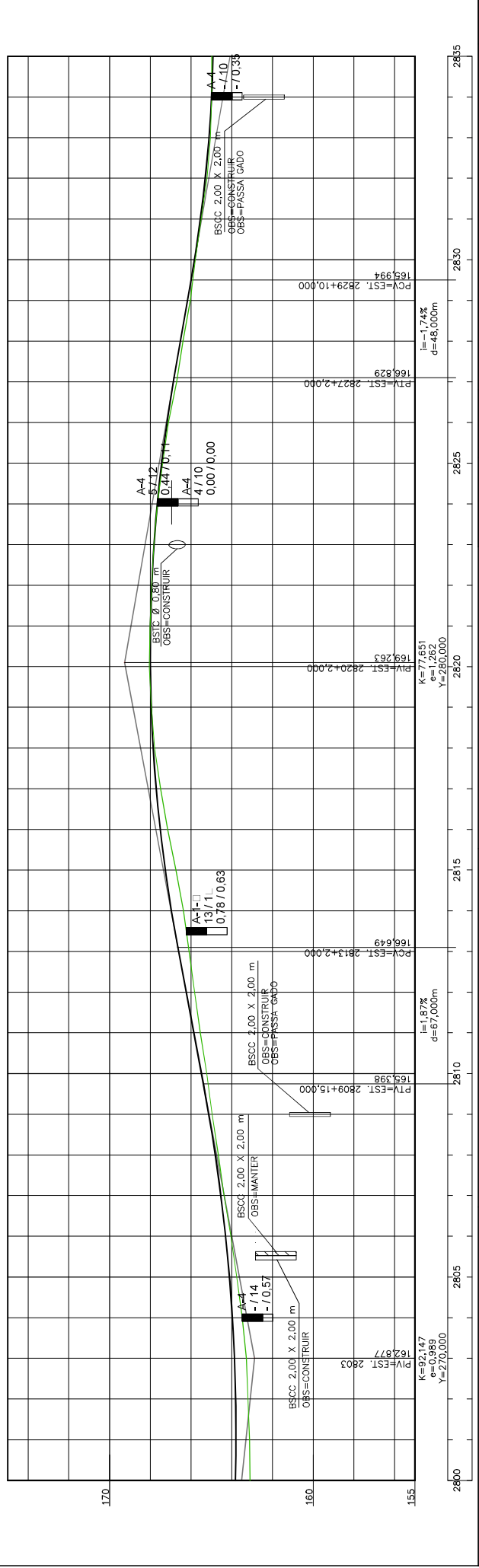
REG N°

LOC

TRECHO: DIVISA BA/MG (Sul do Divão) - Entrocamento BR-259 (B) (Covado)
 SUPERTECHO: DIVISA BA/MG (Sul do Divão) - Entrocamento MG-406 (Almeira)
 SECCIONTO: km 0,0 ao km 61,6



CURVA	R	AC	LC	T-S	D-φ	PC-TS	PT-ST	E	COORDENADAS
57	700,000	33°5'30"	130	273,572	274,902	2810+7,826	2837+2,728	8216314,911	



ESCALA - H=1:2000 (A3)
 V=1:200

NOTAS:
 LEGENDA:
 ———— PERFIL DO TERRENO NATURAL
 - - - - - PERFIL DA ROCHA (INFERIDO)
 ———— GREIDE DO PAVIMENTO ACABADO

VISTO DATA LOTE 01

RODOVIA BR-367/MG

DEPARTAMENTO NACIONAL DE INFRAESTRUTURA DE TRANSPORTES

TRECHO: DIVISA BA/MG (Salto da Divisa) - Entrocamento BR-219 (B) (Covado)
 SUPERRECHO: DIVISA BA/MG (Salto da Divisa) - Entrocamento MC-406 (Almeira)
 SECTORIO: km 0,0 ao km 61,6

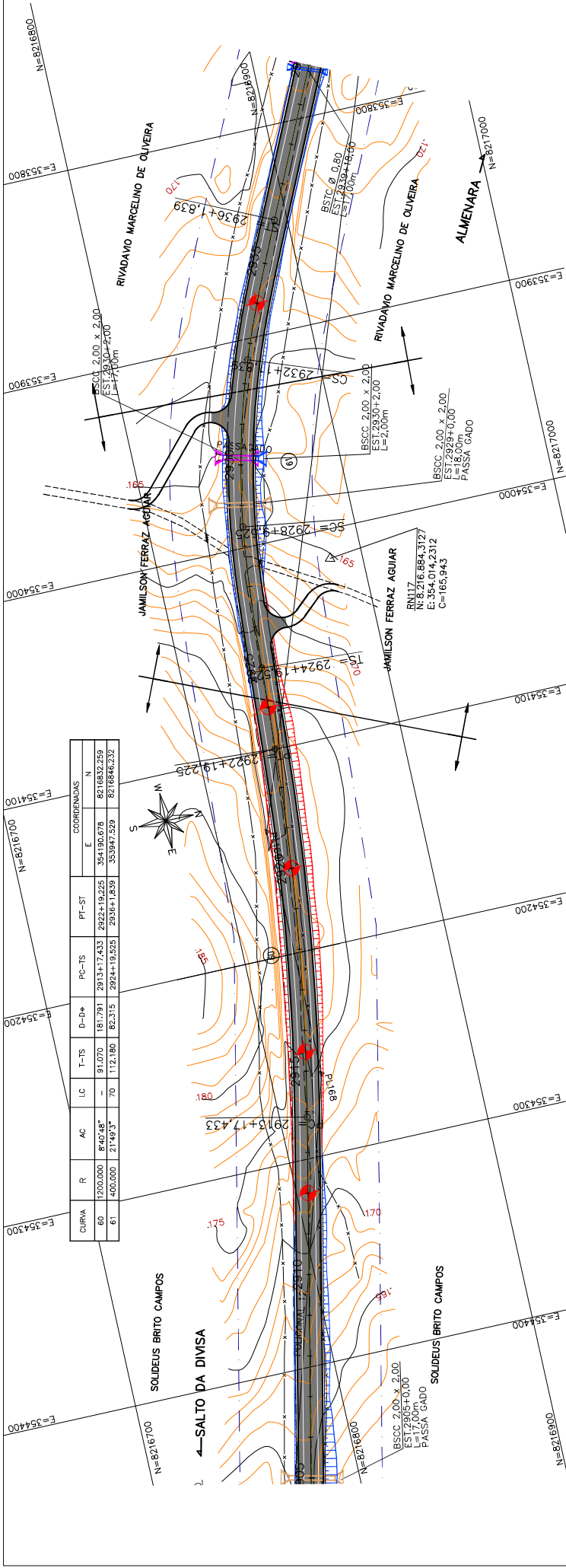
PAVIMENTO - PERFIL - EST. 2800 A EST. 2835

GEOMETRIA

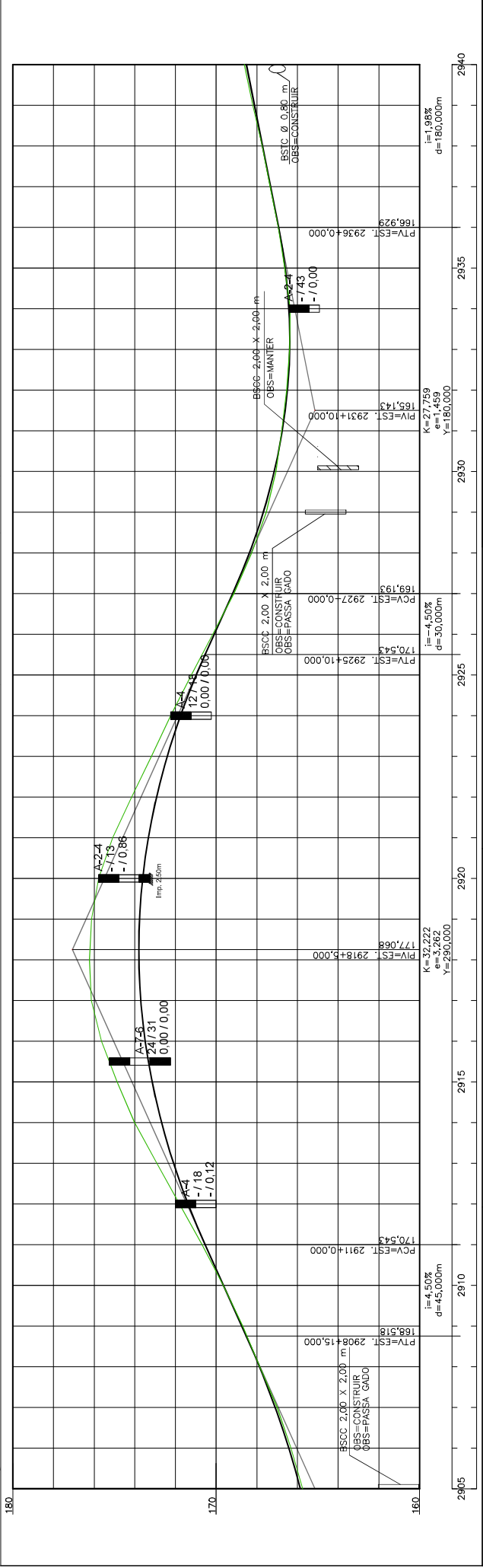
FOLHA LM-51

REG Nº
 LOC

DPP-GP



CURVA	R	AC	LC	T-TS	D-0e	PC-TS	PT-ST	E	COORDENADAS	
									N	
60	1200,000	8°40'48"	70	91,070	181,791	281,317	433	2922+19,225	354190,678	8216832,259
61	400,000	21°49'3"	70	112,180	82,315	2924+19,525	2936+18,839	353997,529	8216846,232	



ESCALA - H=1:2000 (A3)
V=1:200

NOTAS:

LEGENDA:

- PERFIL DO TERRENO NATURAL
- PERFIL DA ROCHA (INFERIDO)
- GREIDE DO PAVIMENTO ACABADO

DEPARTAMENTO NACIONAL DE INFRAESTRUTURA DE TRANSPORTES

MT

RODOVIA: BR-367/MG

LOTE: 01

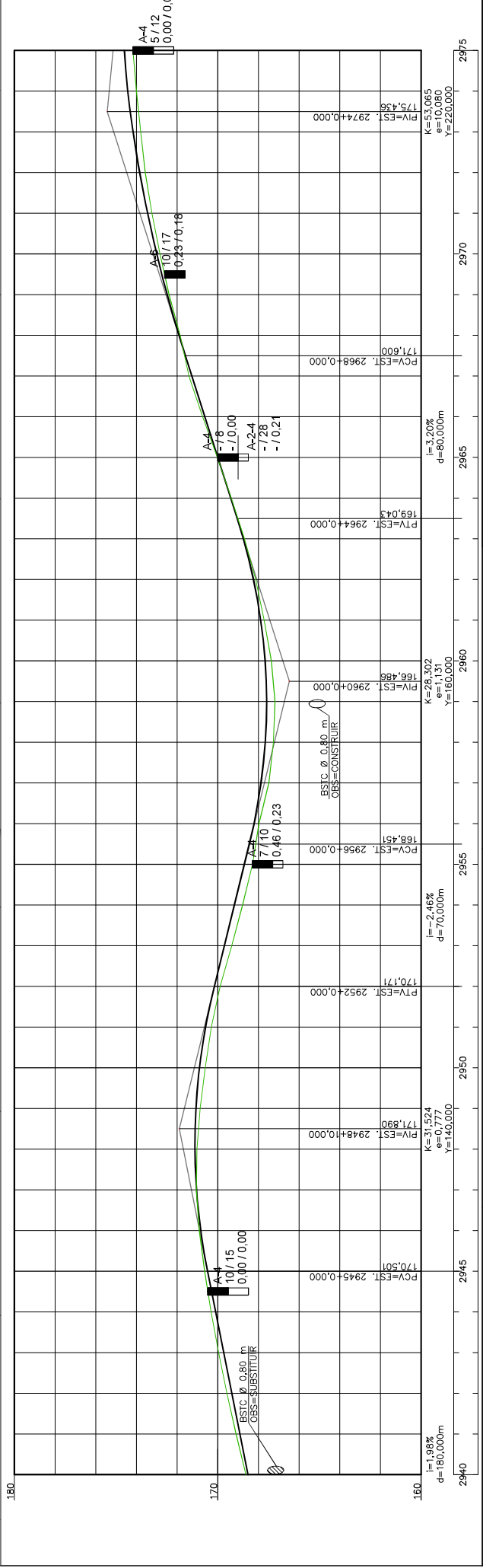
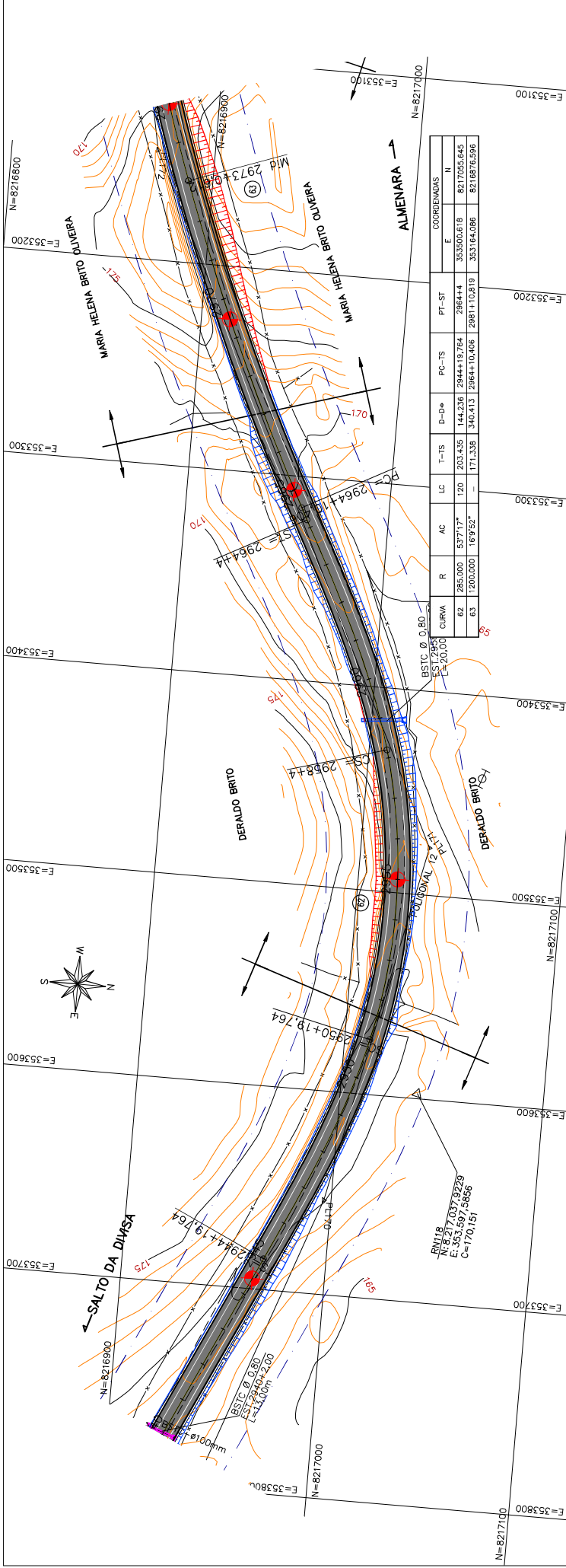
DATA:

VISTO:

GEOMETRIA

PLANTA - PERFIL - EST. 2905 A EST. 2940

FOLHA: 1484



NOTAS:

ESCALA - H=1:2000 (A3)
V=1:200

LEGENDA:

- PERFIL DO TERRENO NATURAL
- PERFIL DA ROCHA (INFERIDO)
- GREIDE DO PAVIMENTO ACABADO

DEPARTAMENTO NACIONAL DE INFRAESTRUTURA DE TRANSPORTES

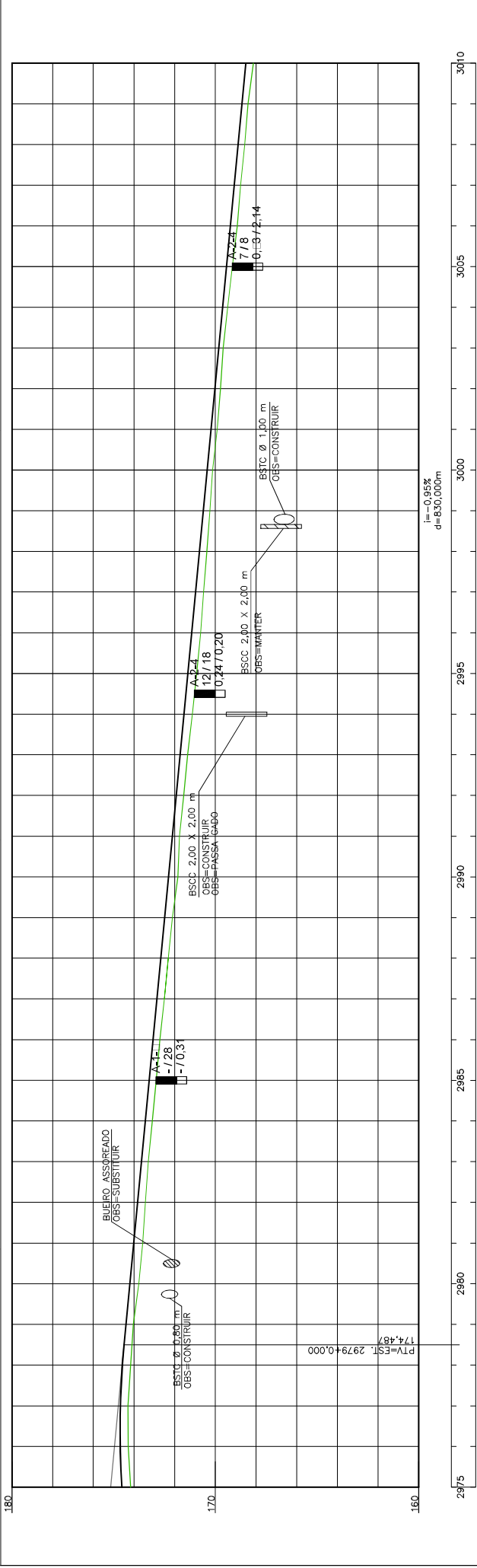
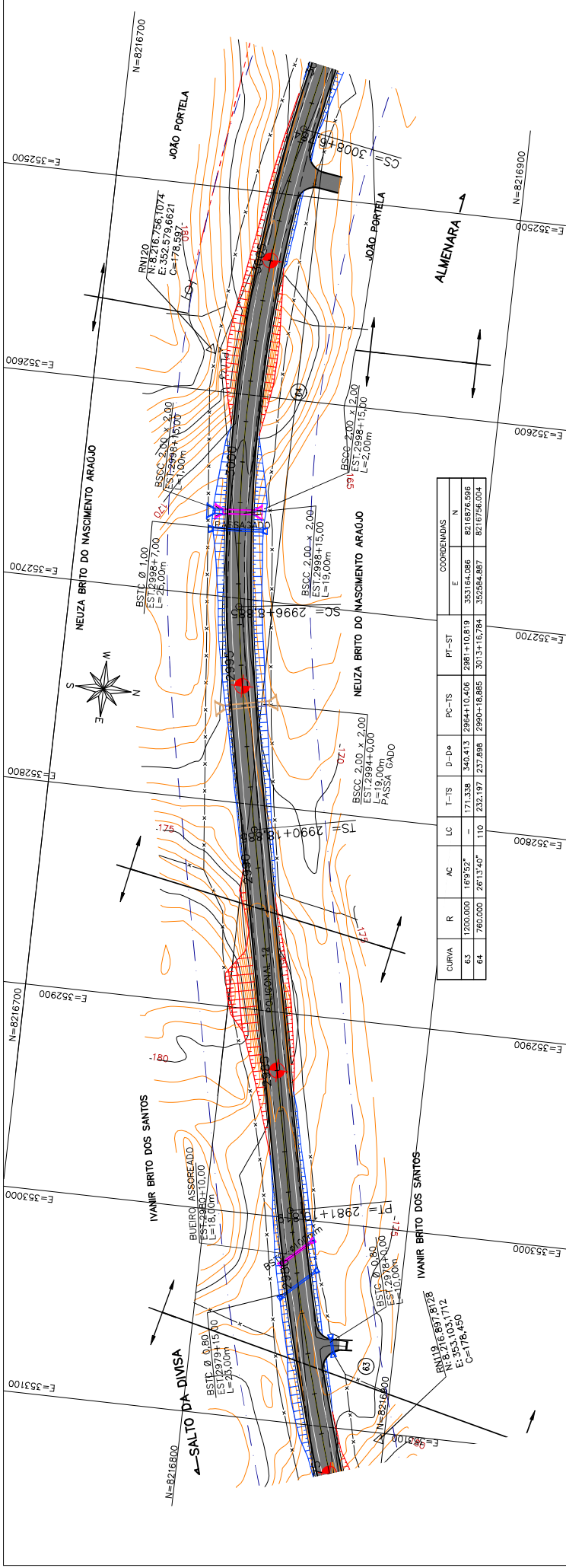
REG Nº
LOC

MT
RODOVIA
BR-367/MG

VISTO DATA LOTE 01 GEOMETRIA

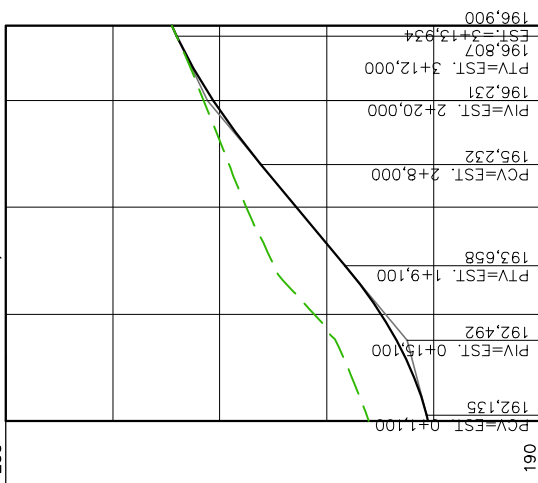
PUNTA - PERFIL - EST. 2940 A EST. 2975

FOLHA L-3485



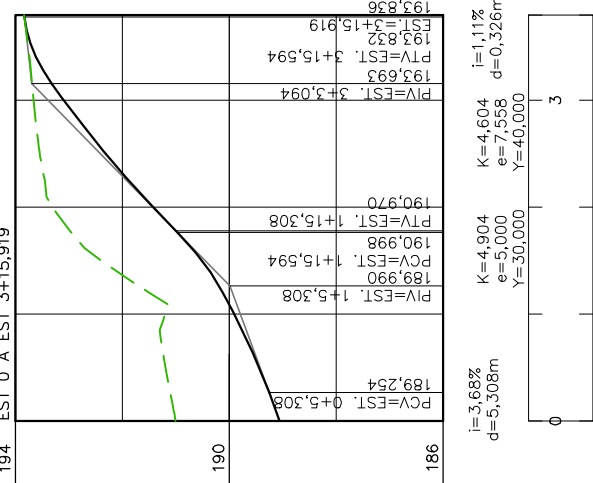
INTERSEÇÃO/RETORNO 6

INT 06 - RAMO A - PERFIL LONGITUDINAL
EST 0 A EST 3+13,934



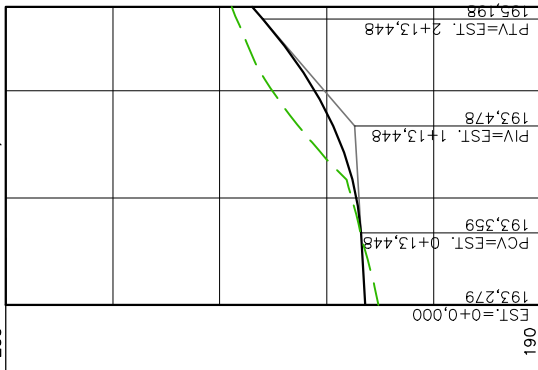
$i=2,55\%$ $K=4,842$ $i=8,33\%$ $K=6,809$ $i=4,80\%$
 $e=0,202$ $d=18,90m$ $e=0,106$ $d=1,934m$
 $Y=28,000$ $Y=24,000$

INT 06 - RAMO C - PERFIL LONGITUDINAL
EST 0 A EST 3+15,919



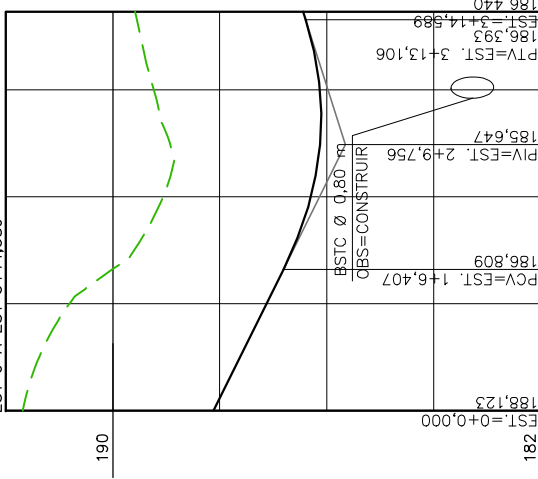
$i=3,68\%$ $K=4,904$ $i=1,11\%$
 $e=5,308m$ $e=7,558$ $d=0,326m$
 $Y=30,000$ $Y=40,000$

INT 06 - RAMO B - PERFIL LONGITUDINAL
EST 0 A EST 2+15,713



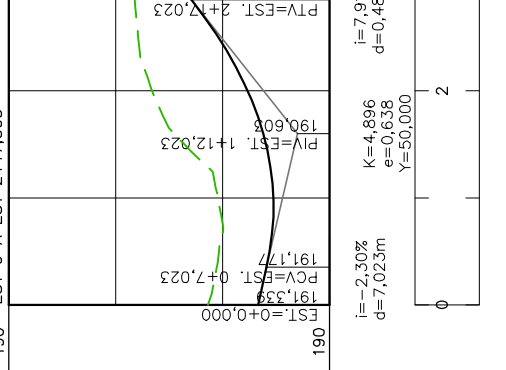
$i=0,60\%$ $K=4,999$ $i=8,60\%$
 $d=13,448m$ $e=0,400$ $d=2,27m$
 $Y=40,000$

INT 06 - ALÇA 1 - PERFIL LONGITUDINAL
EST 0 A EST 3+14,589



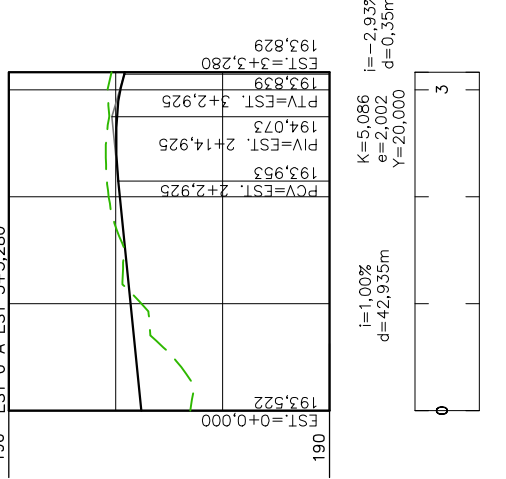
$i=-4,97\%$ $K=5,719$ $i=3,19\%$
 $d=26,417m$ $e=0,477$ $d=1,48m$
 $Y=46,700$

INT 06 - RAMO D - PERFIL LONGITUDINAL
EST 0 A EST 2+17,503



$i=-2,30\%$ $K=4,896$ $i=7,91\%$
 $d=7,023m$ $e=0,638$ $d=0,480m$
 $Y=50,000$

INT 06 - ALÇA 2 - PERFIL LONGITUDINAL
EST 0 A EST 3+3,280



$i=1,00\%$ $K=5,086$ $i=-2,93\%$
 $d=42,935m$ $e=2,002$ $d=0,35m$
 $Y=20,000$

ESCALA - H=1:1000 (A3)
V=1:100

NOTAS:



VISTO DATA LOTE 01

INTERSEÇÕES PLANTA - INTERSEÇÃO 06 - RAMO A, B, C, D, ALÇA 01 E 02

MT	DEPARTAMENTO NACIONAL DE INFRAESTRUTURA DE TRANSPORTES	DPP-OP
RODOVIA BR-367/MG	TRECHO: DIVISA BA/MG (Sítio do Diálio) - Entrocamento BR-269 (B) (Covales)	REG
	SUBTRECHO: DIVISA BA/MG (Sítio do Diálio) - Entrocamento MG-408 (Ameara)	Nº
	SEGMENTO: km 0,0 ao km 61,6	LOC

FOLHA IT-21